

# WIZ-QS-110

## interferometer

Fixtures for FC, SC, MU, LC, E2000, Arinc, MS termini, bare fiber



USB 3.0 SuperSpeed connection

Low weight: 8.6 lbs  
Compact size: 5.9 × 4.72 × 3.5 in



Single fiber



High resolution



White light, phase shift



Auto focus



Fast measurement



Low cost

Customizable fields

IEC, Telcordia standards

Parameters tested

3D, 2D interactive images

**WIZ-QS-110** is an automated single-fiber interferometer designed as a basic solution for high-volume production, where speed, simplicity and precision matter the most.

Whitelight measurement algorithm and precision-aligned fixtures not requiring frequent calibration make it stand out from the competition in the same category of products.

**Results Report**

Result1288

Name: Result1288  
Date & Time: 4/03/2019 4:15:51 PM  
Task name: 2.5 PC  
Scan quality: OK  
Device SN, Fixture SN: WIZ-QS-110 13015, 1300044  
Technician: Admin  
Company: Sumix  
Connector type: 2.5 PC  
Fitting regions: D=250μm; E=140μm; F=50μm;  
Pass/Fail standard: IEC61755-3-1

Measurement Parameter	Units	Pass/Fail Limits		Measured Value	Verdict
		Min	Max		
Ferrule Radius of Curvature	mm	5.00	30.00	17.65	PASS
Fiber Height	nm	-140.1	100.0	29.8	PASS
Apex Offset	μm	0.00	70.00	9.82	PASS
Polish Angle Error	°	-0.200	0.200	-0.023	PASS
Key Angle Error	°	-0.500	0.500	-0.022	PASS

Comments

3D Surface

3D Subtracted Surface

2D Subtracted S...

Modulation

4/03/2019 4:15:51 PM  
DEV-1912-3ce3bf0

3532 Seagate Way, Suite 100, Oceanside, CA 92056, USA

<http://www.sumix.com>

E-mail: [info-team@sumix.com](mailto:info-team@sumix.com)

Tel.: +1 (877) 233-3385

# Specification

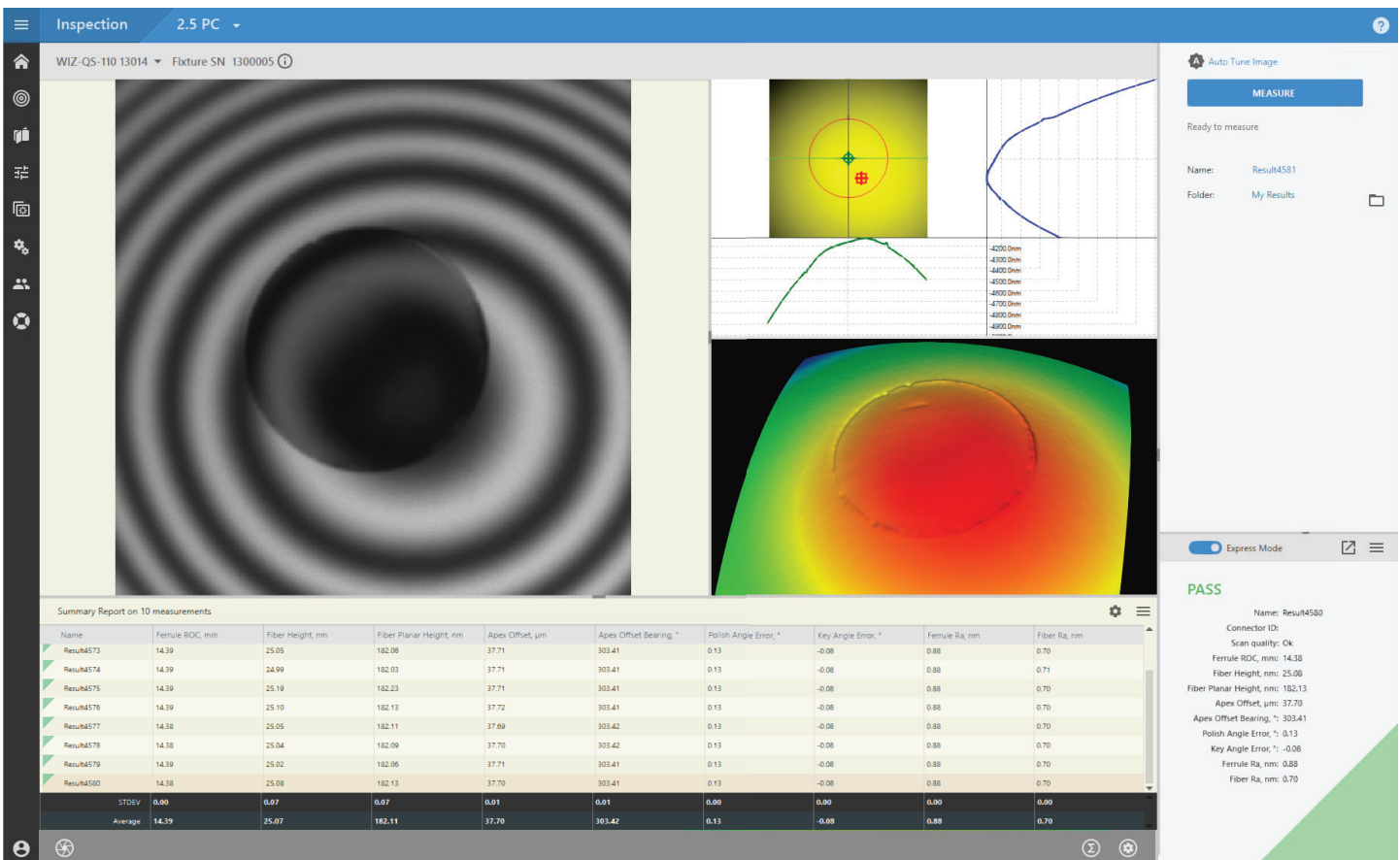
<b>Field of view</b>	1.2 × 0.9 mm
<b>Optical resolution</b>	2.5 μm
<b>Best suitable for connectors/ferrules (PC and APC)</b>	FC, SC, MU, LC, E2000, Arinc, MS termini, bare fiber, ST
<b>Measurement mode</b>	phase shift and white light
<b>Scanning and calculation speed</b>	1.3 sec*
<b>Magnification</b>	0.48 μm/px
<b>Power supply</b>	external, USB 3.0 cable, 12 V DC power adapter
<b>Weight</b>	3.9 kg (8.6 lbs)
<b>Dimensions (H × W × L)</b>	150 x 120 x 90 mm (5.9 × 4.72 × 3.5 in)
<b>Focus</b>	autofocus
<b>Microscope mode</b>	no

\* Excluding autofocus

## Features

- 100 μm scan range for fiber height
- One-click measurement
- Factory precision-aligned fixtures
- Industry-leading MaxInspect™ analytical software
- Data-base connectivity

Note: WIZ-QS-110 is an upgraded model of WIZ-QS+.



Sample measurement result with summary statistics for a batch of connectors.